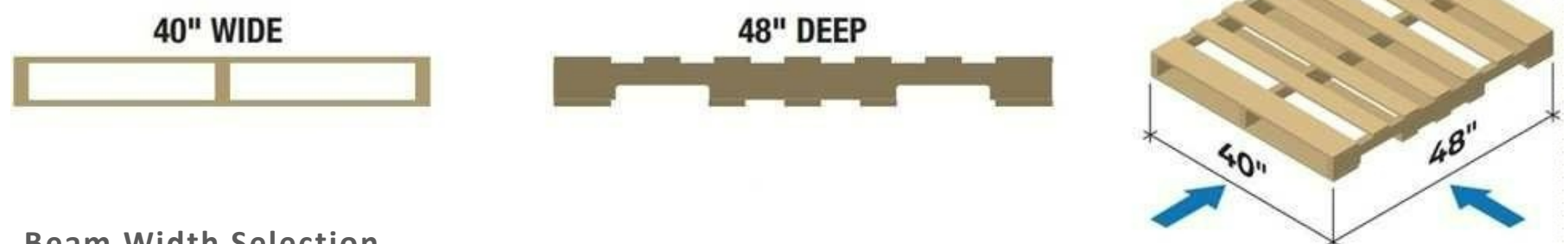


PALLET RACK SELECTION GUIDE

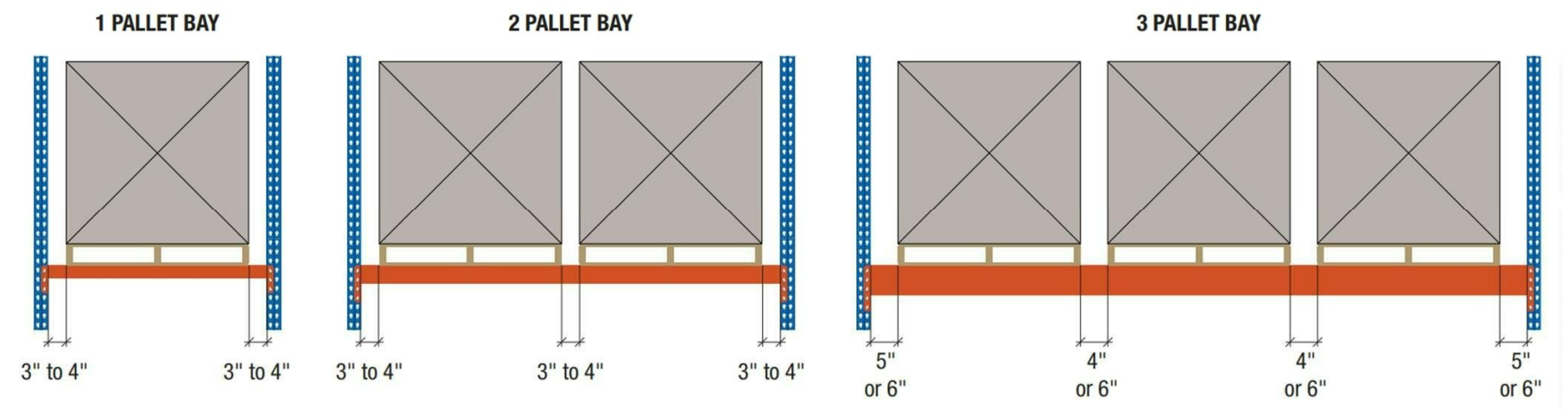
The Interlake Mecalux assembled selective bolted pallet rack units provide versatility for warehouses that have wide varieties of product types.

The weight and size of your pallets are the main characteristics of selecting a pallet rack system.

Pallet Size | Weight



Beam Width Selection



Selecting the correct beam width for your application use is determined by adding the width(s) of your pallet loads.

A 3\"- 6\" loading clearance should be taken into consideration between pallet loads for mindful loading and unloading of pallets.

Beam Width	Qty of pallets	Pallet Width Size
48"	1	40" W
96"	2	40" W
108"	2	48" W
120"	3	36" W
144"	3	40" W

PALLET RACK SELECTION GUIDE

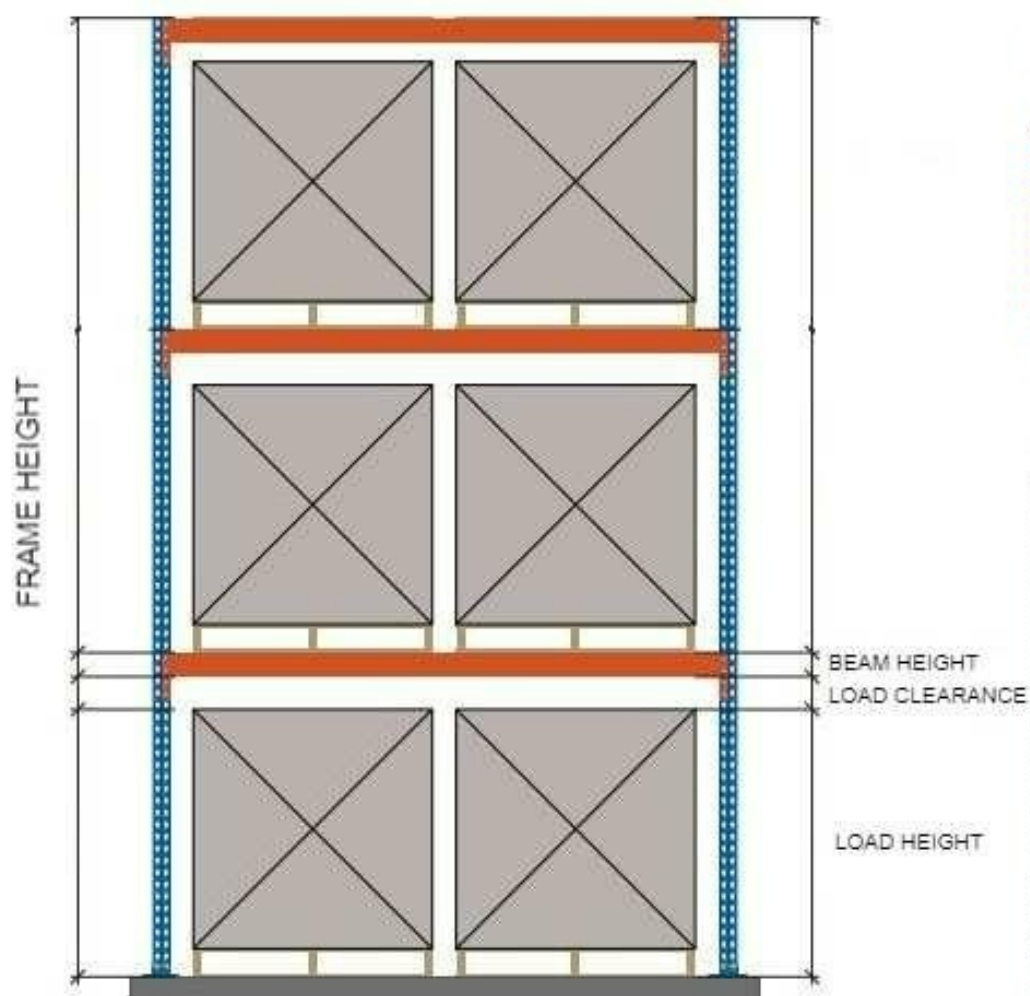
Upright Frame Selection

Selecting the correct height and depth of your pallet rack unit is important with consideration of maximum forklift height and ceiling height:

Height

The upright height depends on the height of the pallet loads and total amount of storage beam levels:

- Overall height of load + (4" – 6") vertical loading clearance + height of beam x total amount of levels



Depth

The upright depth depends on the depth of the pallet being used.

- Overall depth of pallet + (6" overall) horizontal overhang

